

## SiteSentinel® iSite™ Console

Provides complete tank monitoring, inventory management and environmental compliance through the incorporation of the latest Windows®-based technology, which allows users to view data remotely from anywhere in the world.

The SiteSentinel® iSite™ has been designed to lower installation costs by reducing the number of wires to the probes, sensors and leak-detection devices that are connected to its VSmart Module. In addition, all devices are automatically detected and configured by using the touch-screen interface, making it one of the easiest ATG system in the industry to install, configure and use.

The SiteSentinel® iSite™ console has been designed to reliably provide connectivity now and in the future. Available ports include: Ethernet, USB and Serial (RS-232, RS-485), and modem communication ports. It is also one of the easiest tank gauges to use, requiring the least amount of training and menu navigation to access critical data.

## SiteSentinel® iSite™ Console

Part of the

**SiteSentinel®**  
family of products



### Features



#### Easy To Connect

The SiteSentinel® iSite™ console can be accessed from anywhere there is internet access: back office, front of store, wall mount, desktop, at home or thousands of miles away – it's your choice.



#### Easy To Use

The SiteSentinel® iSite™ is one of the easiest tank gauges to use, requiring the least amount of training and menu navigation for accessing critical data.



#### Convenient

The SiteSentinel® iSite™ console is the only console designed for connectivity now and in the future. Available ports include: 2 x Ethernet, 2 x RS-485, 4 x RS-232, 2 x USB, 2 internal USB, modem and wireless connectivity



#### Savings

The SiteSentinel® iSite™, when used with IntelliSense™ Smart Sensors and/or wireless option, results in the least amount of conduit and wiring for installations.

- ◆ Large color touchscreen display gives one-touch access to real-time inventory data, delivery status, alarm conditions, and leak-detection information – all of which are accessible from a single cockpit view
- ◆ Statistical Leak Detection (SLD) - optional advanced leak-testing technology - provides continuous automatic in-tank leak-detection operation, with no need to schedule test times/or shut down tanks
- ◆ Programmable Automatic Leak Detection (ALD) performs daily, weekly, monthly and annually required static leak tests when the system detects a quiet time
- ◆ Certified automatic or on-demand Line Leak Detection (LLD) capabilities meet and/or exceed U.S. Environmental Protection Agency regulatory requirements
- ◆ Internal power supply works between 96-264 VAC, covering all global requirements
- ◆ Provides real-time, accurate inventory information

## Additional Features

- ◆ Displays gross and/or net-corrected tank volume, product level, water level and temperature for individual tanks
- ◆ International user-friendly icons follow guidelines in MIL STD - 1472
- ◆ Can be configured to meet localized settings (Date/Time formats and Metric/English units)
- ◆ Downloadable and Flash upgradable software for easy updates
- ◆ Communicates with industry-standard, third-party POS protocol and display format commands
- ◆ USB and shared network printer interface
- ◆ Optional internal thermal printer
- ◆ Provides programmable correction factors for restrapping tanks (2,000 points)
- ◆ Available output module provides multi-purpose relays, which can be used for outputs such as overflow alarms, sensor alarms or STP positive shutdown
- ◆ Optional density measurement sensor has the capability to monitor product quality
- ◆ Includes address book of contacts to whom the unit can send text messages, fax and/or emails on any alarms and events
- ◆ Able to schedule reports to automatically run at specific times
- ◆ Automatic Calibration and Reconciliation (ACR)
- ◆ Non-volatile memory for event storage up to 10 years
- ◆ Compliance calendar accessible with a single touch
- ◆ Monitors up to 256 probes, 1024 sensors and/or 16 VLLD sensors

## Leak Test Certification

EPA Static Leak and Continuous Test Certified (ATGS & CITLDS Methods):

- ◆ 0.2 gph (0.76 L/hr) Statistical Leak Test  
Note: 397,000 gallons (1,502,809 liters)/month throughput for single-tank, 2-tank or 3-tank manifold installations; 30,000-gallon (113,562-liter) combined maximum capacity
- ◆ 0.2 gph (0.76 L/hr) Static Leak Test
- ◆ 0.1 gph (0.38 L/hr) Static Leak Test
- ◆ 3.0 gph (11.4 L/hr) Catastrophic Line Leak Test
- ◆ 0.2 gph (0.76 L/hr) Precision Line Leak Test
- ◆ 0.1 gph (0.38 L/hr) Precision Line Leak Test

## Specifications

**Dimensions:** 114.5 inch W x 12 inch H x 7 inch D (37 cm x 30 cm x 18 cm)

**Operating Temperature:** 32° F to 122° F (0° C to 50° C)

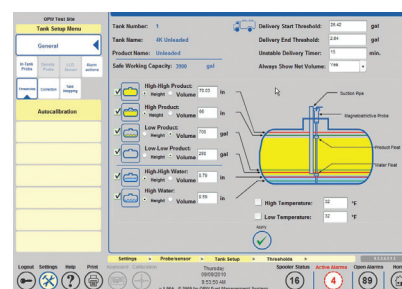
**Humidity:** Non-Condensing (Max 95%)

**Typical Mounting Location:** Indoor, Non-Hazardous Area

**Power Requirements:** 120/240 VAC ± 10%, 50/60 Hz

**Communication Ports:** 2 x Ethernet, 2 x RS-485, 4 x RS-232, 2 x USB, 2 internal USB, modem and wireless connectivity

**Up to 16 relays max.:** 4 output relays per module, 4 modules per system using optional OM4



Tank Threshold Screen



Compliance Calendar

NOTE: See OPW Fuel Management Systems' Website at [www.opwglobal.com](http://www.opwglobal.com) for detailed product literature, manuals and sales representative contact information for your area.